



1- Which one of the following best describes the function of a cell membrane?

- (a) It keeps the cell in shape. (b) It controls the substances entering and leaving the cell.  
(c) It controls the substances entering the cell (d) It supports the cell structure.

2- Which of the following structures are (a) in plant and animal cells, (b) in plant cells but not in animal cells?

**(cell wall, cytoplasm, cell membrane, mitochondria, nucleus, central vacuole, Chromosomes)**

3- Select the most appropriate words from the list below to complete the following paragraph:

**(shape, vacuole, adapted, cytoplasm, size, specialised, mature, mitochondria)**

If a cell develops in such a way that it does one particular job very efficiently, it is said to be ..... .  
Such a cell is also said to be ..... to its function. A nerve cell is .....for conducting impulses. It can do this efficiently because of its..... and the chemical.

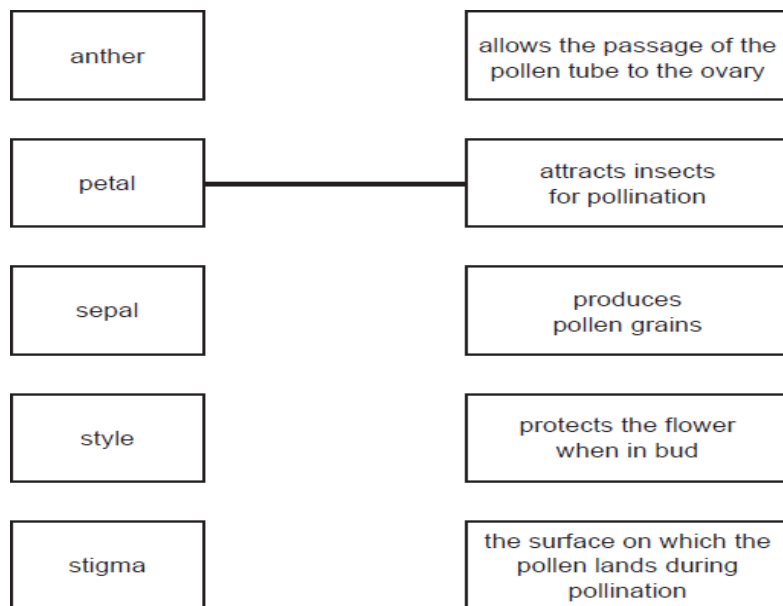
4- compare between eukaryotes and prokaryotes

5- Classify the following under the headings 'Cell structure', 'Tissue', 'Organ' or 'System'.

*bone, nucleus, skeleton, brain, nerve, mitochondrion, muscle, cytoplasm, sperm,  
heart and blood vessels, stomach, alimentary canal, lung.*



- 1- Using straight lines, match the names of the flower parts with their functions.  
One has been completed for you



- 2- Complete the following paragraph selecting words from the list below.

( You can use one word more once or more )

**(anthers, ovule, stigma, plant, flower, pollen, ovary, petal, style, receptacle, stamens)**

Pollination is the transfer of ..... from the ..... to the ..... in a flower. In cross-pollination, the ..... from a flower on one ..... is transferred to the ..... of another ..... of the same species.

- 3- Draw a flow chart showing the process of seed formation starting from pollination

### Biology Worksheet

1) List down 3 unicellular organisms

a) \_\_\_\_\_

b) \_\_\_\_\_

c) \_\_\_\_\_

2) Mention an organ system and at least 2 organs forming this organ system

---

---

---

3) Explain why euglena is able to make its own food

---

---

4) What are the laboratory precautions you should follow when you enter the lab?

---

---

---

5) What are the equipments we used to see amoeba clearly ?

---

---

6) Which best describes a single-celled organism?

- a) a small group of organisms
- b) an organism that is able to carry out all its life processes
- c) a small organism with a variety of parts
- d) an organism that relies on other organisms to survive

7) Which is a characteristic of bacteria?

- a) large in size
- b) found only in one particular environment
- c) made up of many different cells working together
- d) able to survive as a single cell