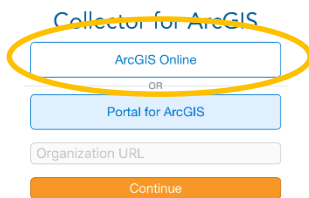




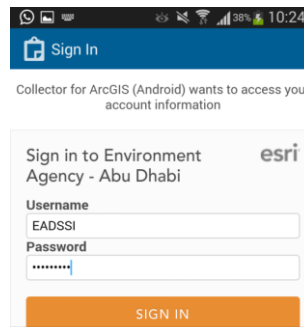
I See A Tree

Guide Document

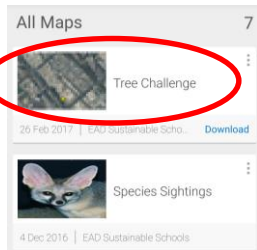
1. Download and Install "Collector for ArcGIS" App from PlayStore or Appstore
2. Start the App
3. On the initial screen click on ArcGIS Online and Continue



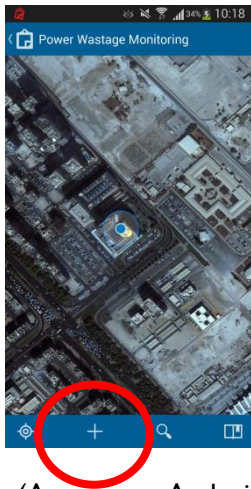
4. On the Next screen enter the following:
Username: EADSSI
Password: Education2015



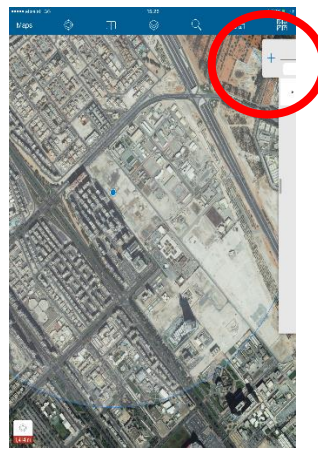
5. You will see many Map templates here, click on the Map titled **Tree Challenge**



6. If the GPS is enabled, the template shows your current location.
When the map is open, you are ready to collect your records of power wastage.
7. Click on the **+** sign to collect a new record.

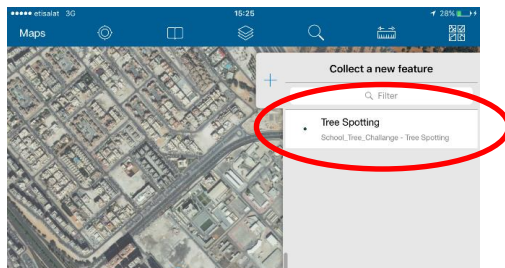


(As seen on Android Device)

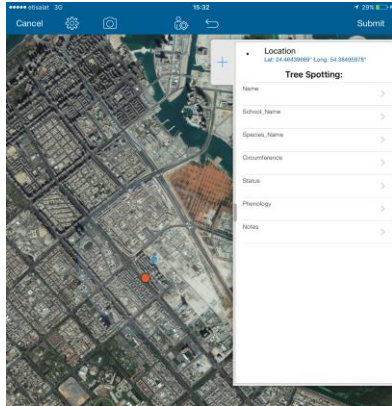


(As seen on Apple Device)

8. On the next screen Click on Tree Spotting



9. When you click on Tree Spotting, a small orange dot will appear on the screen where you took the record, if it is not pointing to the correct location, move it with your finger to place on the tree that you have recorded.



10. After making sure that the orange dot is correctly located, start filling the form that you see on the right of the screen.
11. **Name:** Enter your name
12. **School Name:** Enter your School Name
13. **Species Name:** Enter the Tree name, if you don't know the specie or common name of the tree, refer to the Tree Guide, which is found in here: <https://goo.gl/QaeOOO>
14. **Circumference:** Measure the circumference of the tree trunk in centimetres, refer to Tree Guide for how to do it. Please follow the unit, use only in **CENTIMETRES**
15. **Status:** Select Native or Exotic based on the tree. Refer to Tree Guide
16. **Phenology:** Observe the tree and note down if it is Flowering/Fruiting/Has brown leaves or any such phenomena.
17. **Notes:** Note down any other information that you observe on the tree, like 'leaves are covered in dust as it on the roadside, etc.
18. Click on the Camera or Paper Clip Icon on the screen and attach a picture of the tree
19. Click on Submit, to save this record.

Location	No valid Location
Tree Spotting: Ahmed	
Name	Ahmed
School_Name	UAE School
Species_Name	Ghaf
Circumference	60
Status	Native
Phenology	Has flowers
Notes	Saw a nest and a beehive on the tree.



You can collect data without internet also. Just note down the information for every tree and remember the location of the tree, take a picture of the tree and when you have internet, mark it on the app. However please make sure you have the correct location.

That's it! Be sure you fill all the boxes and record as many trees as you can, to win the prize!

Contact us on sustainableschools@ead.ae or anupama.chaudhari@ead.ae or 026934433 if you have any questions.